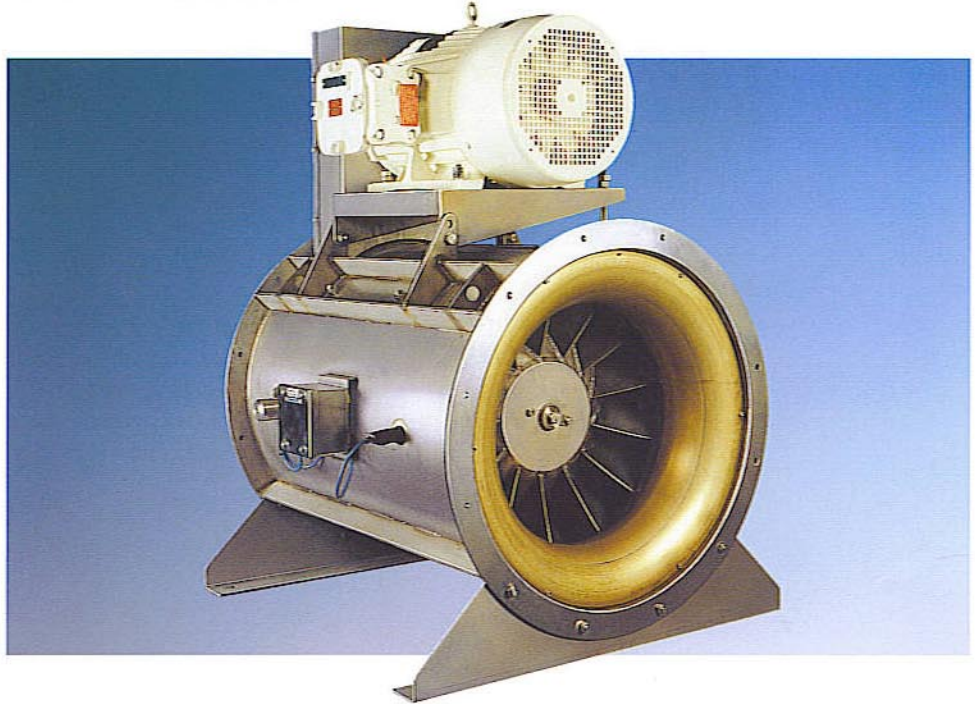


FLAMGARD

MIXED FLOW FANS

'MX.1' SERIES



Flamgard's Mixed Flow Fan range is available in sizes from 300mm to 1800mm diameter for a wide spectrum of duties derived from its design versatility.

The fans have been type tested to BS.848 Part I (1980) for performance (within class 'B' tolerances) and BS.848 Part II (1985) for noise generation.

The MX1 fan is available in belt and direct driven configuration and incorporates all the features expected of a highly efficient 'top of the range' fan unit.

These include an aerodynamic inlet cone, sophisticated jig welded impeller, down stream guide vanes, heavy duty bearings, external grease nipples, anti spark features etc.

The mixed flow fan is unique because of its 'non-stalling' characteristic and is widely used in applications where variations in the system conditions (wind, filtration etc.) could cause a standard axial or centrifugal fan to enter its stall region causing vibration and premature failure.

In addition the pressures and volumes developed are significantly more than comparably sized other types of fans.

For performance characteristics please refer to Flamgard publication FD21.

SIZE RANGE

300mm to 1800mm diameter.

CONSTRUCTION

Impeller and casings manufactured from BS.1449 Part II 1983 stainless steel grade 316S11 or grade 304S12 cold rolled grade II B. Alternative materials are available if requested.

DESIGN FEATURES

High efficiency impeller – non-stalling.
Aerodynamic inlet cone.
Down stream guide vanes.
Statically and dynamically balanced.
BS 848 Part I and II air and noise tested respectively.
External grease nipples.
Belt or direct drives.
Access doors.

OPTIONS

Anti-spark features.
Flexible connectors.
Guards.
Different types and makes of motors as requested.
Speed sensors.
Vibration pick-ups.
Temperature sensors.
Earthing bosses.

Ordering Procedure

500 / A / MX1 / 11 / EMD

Fan diameter (mm)

Synchronous speed of motor

Type of impeller

kW rating of motor

Drive type

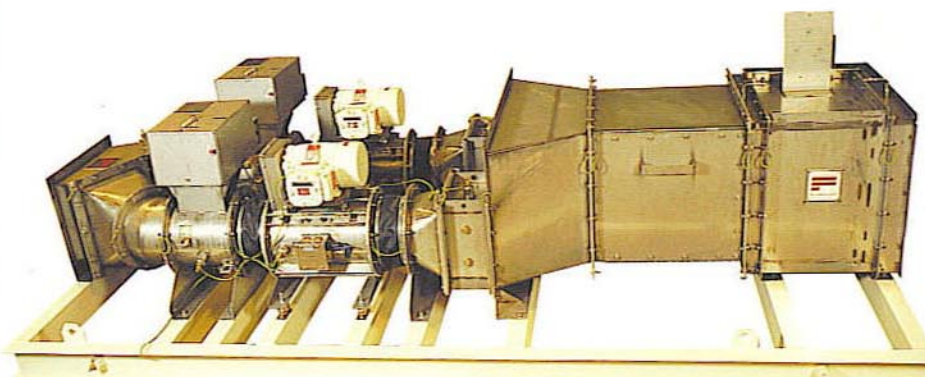
DD = Direct drive

EMD = External motor drive

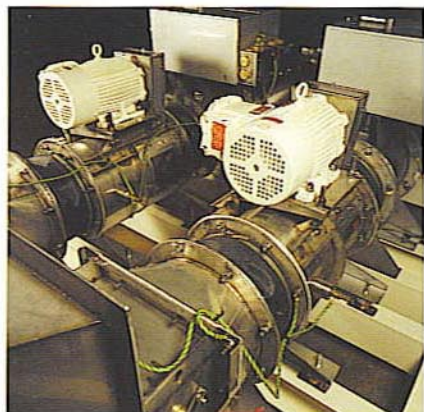
DIMENSIONS

MIXED FLOW FANS

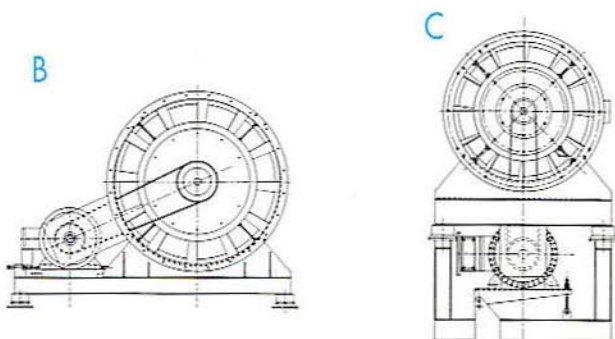
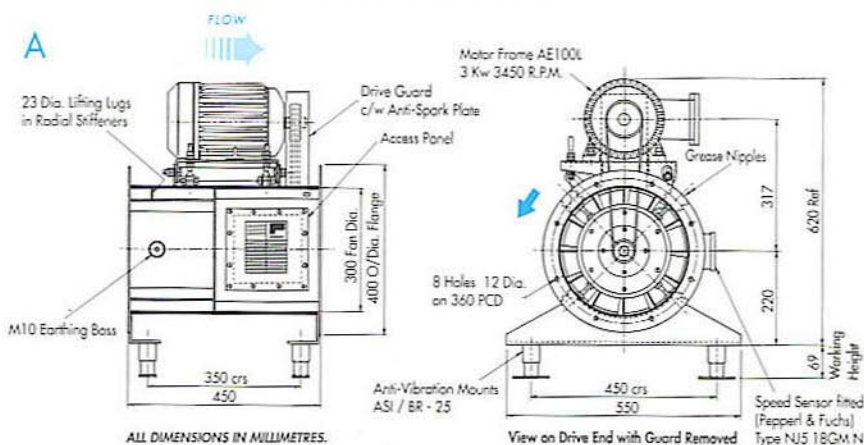
'MX.1' SERIES



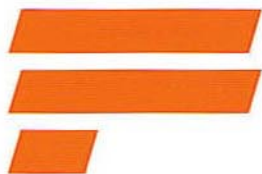
General ventilation skid package used 'offshore', utilising Flamgard products which include two 300mm MX1 fans in parallel.



TYPICAL MOTOR POSITIONS



- A - Motor mounted on hinged platform (shown in detailed form for a 300mm fan).
- B - Motor mounted on base frame alongside using slide rail.
- C - Motor mounted directly underneath.



FLAMGARD

B.O.B. STEVENSON LTD.

COLEMAN STREET

DERBY. DE24 8NL

Tel: 01332 - 574112

Fax: 01332 - 757286

www.bobstevenson.co.uk

e-mail: sales@bobstevenson.co.uk