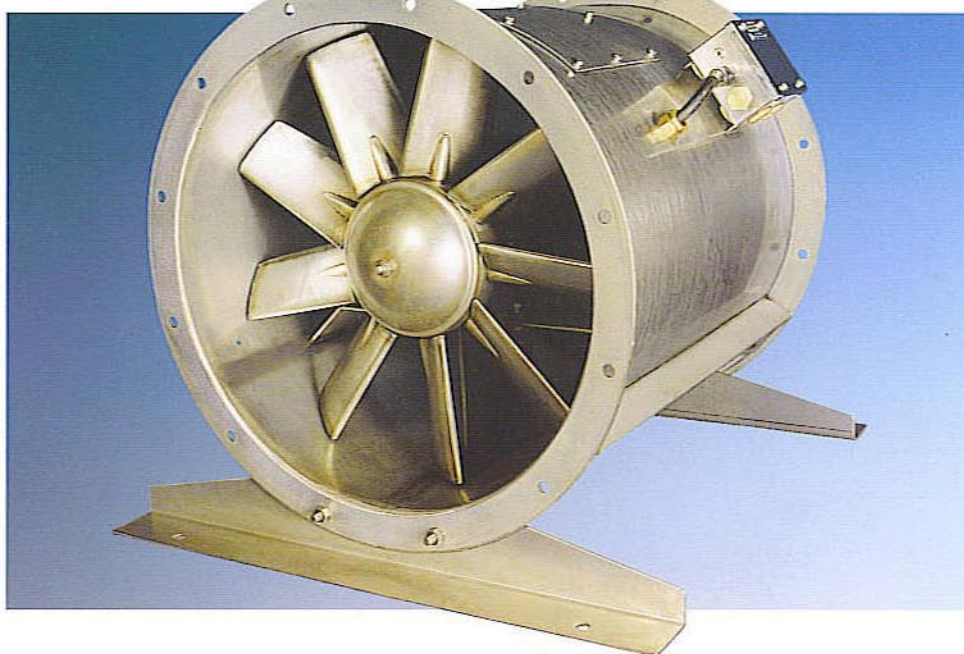


AXIAL FLOW FANS

'AX' SERIES



Flamgard's Axial Flow Fan range is available in sizes from 12" (305mm) to 72" (1829mm) diameter for a wide spectrum of duties, derived from its versatility of design.

The fans have been type tested to BS.848 Part I (1980) (performance within class 'B' tolerances) and BS.848 Part II (1985) for noise generation.

The AX1 fan has the smallest impeller hub/duct ratio and is available in 5 and 9 blade versions, selected to match the required performance. A contra rotating version (i.e. 2 stage in series) of the 9 blade unit is available to develop higher static pressures.

The AX2 fan has a larger impeller hub/duct ratio than the AX1 and is only available in a 9 blade version. The higher hub ratio is capable of developing higher static pressures than the AX1 and can be further enhanced by the fitment of downstream guide vanes.

Both fan designs feature high performance, low noise generating, adjustable pitch aerofoil blades.

The robustly constructed fan casings are available as standard short 'ST' or standard long 'LT' versions. Fan cases are flanged at each end for ductwork connection.

Standard electrical connections are made directly to the motor mounted terminal box in the instance of 'ST' versions and to a fan case mounted terminal box on 'LT' versions. Alternative arrangements are available by request.

For performance characteristics please refer to Flamgard publication FD19.

SIZE RANGE

12" (305mm) to 72" (1829mm).

CONSTRUCTION

Impeller and casings manufactured from BS.1449 Part II 1983 stainless steel grade 316S11 or grade 304S12 cold rolled grade II B. Alternative materials are available if requested.

Base frames manufactured in stainless steel or suitably painted mild steel channel.

Guards in stainless steel.

DESIGN FEATURES

Aerofoil blades.
Substantial construction.
Statically and dynamically balanced.
BS.848 parts I and II air and noise tested respectively.
Heavy duty bearings on belt driven fans.
Key-wayed shaft.

OPTIONS

Various impeller configurations for optimum performance and efficiency.
Adjustable/fixed pitched blades.
Different types and makes of motors as required.
Long cased and short cased.
Various mounting configurations.
Belt drive with external motor mounting.
Anti-spark features.
External grease nipples.
Inlet cones.
Matching flanges.
Anti vibration mounts.
Flexible connectors.
Guards.
Earthing bosses.

Ordering Procedure

24 / A / AX1 / 7.5 / DD

Fan diameter (inches)

Synchronous speed of motor

kW rating of motor

Type of impeller

AX1 = Standard impeller

AX2 = High hub ratio impeller

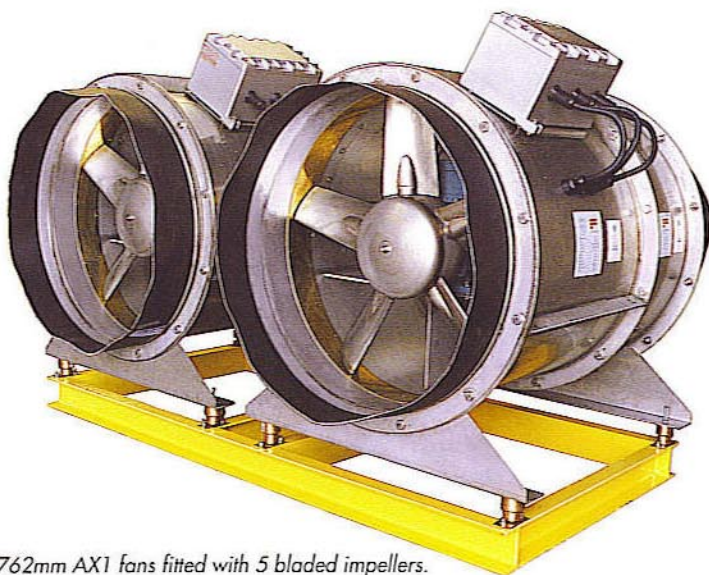
Drive type

DD = Direct drive

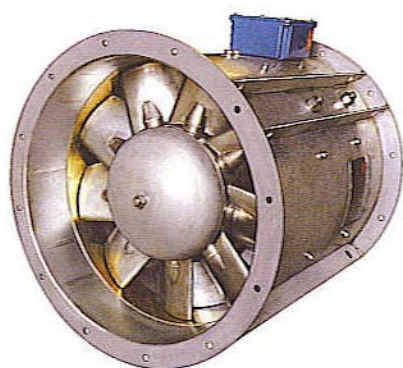
EMD = External motor drive

DIMENSIONS

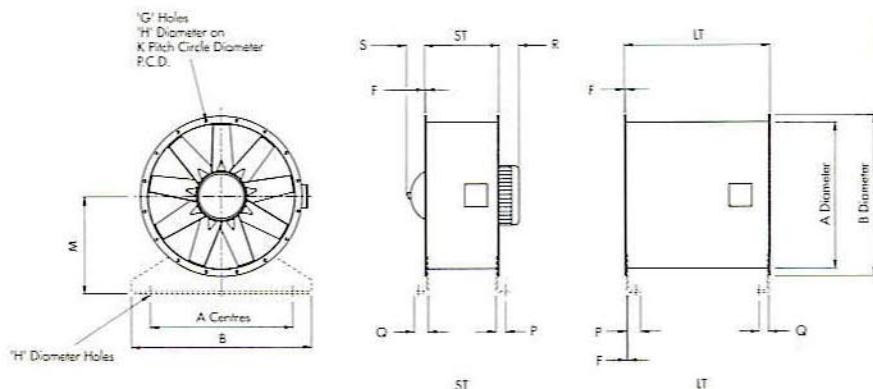
AXIAL FLOW FANS 'AX' SERIES (TYPES 1 & 2)



Two 762mm AX1 fans fitted with 5 bladed impellers.



Axial fan fitted with an AX2 type impeller.



ALL DIMENSIONS IN MILLIMETRES.

Fan Diameter ins (A) mm	B	LT	Motor Frame Size	ST	Motor Frame Size	F	G	H	K	M	P	Q	R	S
12	305	405	D80	260	D80	3	8	12	36.5	240	50	28	225	24
15	381	481	D80 - D90	260	D80 - D90	3	8	12	44.1	280	60	35	225	24
18	457	557	D80 - D112	260	D80 - D112	3	8	14	51.7	340	65	35	284	35
19	483	583	D80 - D112	260	D80 - D112	3	8	14	54.3	355	65	35	284	35
21	533	633	D80 - D112 D132	260	D80 - D132	3	8	14	59.3	380	65	35	284	35
24	610	710	D90 - D112 D132 - D160	260	D90 - D160	3	12	14	67.0	420	65	35	404	39
27	686	786	D90 - D112 D132 - D160	260		3 5	12	14	74.6	460	80	45	424	45
30	762	862	D90 - D112 D132 - D180	260	D90 - D180	3 5	12	14	82.2	500	80	45	479	45
36	914	1014	D100 - D132 D160 - D200	260 311	D100 - D132 D160 - D200	5	12	14	97.4	575	85	45	499	57
38	965	1105	D100 - D132 D160 - D200	260 311	D100 - D132 D160 - D200	5	16	14	105.5	600	85	45	499	71
42	1067	1207	D132 D160 - D225	311	D132 - D225	10	16	14	115.7	655	85	45	604	79
48	1219	1359	D132 D160 - D250	311 362	D132 - D180 D200 - D250	10	20	14	130.9	740	85	45	629	79
54	1372	1512	D160 D180 - D250	311 362	D160 - D180 D200 - D250	10	20	14	146.2	815	85	45	629	79
60	1524	1664	D160 D180 - D250	311 362	D160 - D180 D200 - D250	10	20	14	161.4	890	85	45	629	79



FLAMGARD

B.O.B. STEVENSON LTD.

COLEMAN STREET

DERBY. DE24 8NL

Tel: 01332 - 574112

Fax: 01332 - 757286

www.bobstevenson.co.uk

e-mail: sales@bobstevenson.co.uk